

# CONE CRUSHING



# CONTENTS

**Primary, Secondary,  
and Tertiary Cone  
Crushing Plants . . . . .4**

**Automation and  
Connectivity System (ACS-c 5). . . . .6**

**Computerized  
Hydrocone Crushers . . . . .7**

ELRUS / Sandvik CH660 Hydrocone Crusher  
ELRUS / Sandvik CH840i Hydrocone Crusher

**Hydraulic Cone Crushers . . . . .12**

ELRUS / Sandvik CH430 Hydraulic Cone Crusher  
ELRUS / Sandvik CH440 Hydraulic Cone Crusher  
ELRUS / Sandvik CH830i Hydraulic Cone Crusher

**Gyratory Cone Crushers . . . . .18**

ELRUS / Sandvik CS440 Gyrocone  
ELRUS / Sandvik CS660 Gyrocone  
ELRUS / Sandvik CS840i Gyrocone

**Closed Circuit Crushing Plant . . . . .24**

**Self-Contained Crushers . . . . .26**

CH430 Self-Contained Cone Crusher  
Self-Contained Compact Crushing Spread





## PRIMARY, SECONDARY, AND TERTIARY CONE CRUSHING PLANTS

ELRUS Cone Plants are equipped with Sandvik Cone Crushers ranging from 200 to 500 horsepower. Each crusher is designed with high-performance features, including the Hydraulic Hydroset™ System for safety and setting adjustments, ASRi automated cone control for real-time performance management, Constant Liner Performance (CLP), and a variety of crushing chambers. These features combine to deliver maximum crusher performance and productivity.

The Sandvik CS and CH series cone crushers offer versatility across a wide range of applications. With adjustable crushing chambers and eccentric throws, they can easily adapt to production changes, making them ideal for primary, secondary, and tertiary crushing in portable, stationary, and even mobile setups.



# AUTOMATION AND CONNECTIVITY SYSTEM (ACS-c 5)

The ACS-c 5 automation system for Sandvik's 800i cone crusher series brings simplicity and power to crusher operation and maintenance. As Sandvik's most advanced and user-friendly automation system, the ACS-c 5 integrates all crusher modules and subsystems into a single intuitive platform. This role-based system is specifically designed to meet the diverse needs of operators, maintenance personnel, and process engineers, streamlining workflows and empowering users with actionable insights, proactive maintenance tools, and comprehensive data analysis. By offering role-specific guidance and access to advanced functionality, ACS-c 5 ensures maximum crusher uptime, optimized performance, and reduced downtime.

The ACS-c 5 transforms crusher automation by delivering a powerful, role-oriented solution that balances ease of use with robust functionality. Whether you're focused on achieving operational targets, maintaining equipment reliability, or optimizing plant performance, the ACS-c 5 ensures you stay in control and ahead of potential challenges.

## FEATURES:

- **One Unified System for Crusher Control:** All modules and subsystems are integrated into a single, intuitive interface for seamless operation and monitoring
- **Role-Based Interaction:** Customized tools and guidance for operators, maintenance teams, and process engineers to simplify workflows and clarify responsibilities
- **Advanced Troubleshooting Tools:** Alarm and event logs, historical trend analysis, and a built-in search function simplify diagnosing and resolving recurring issues
- **Automation and Predictive Maintenance:** All sensors collaborate for real-time monitoring, equipment protection, predictive insights, and proactive maintenance scheduling
- **Optimized Alarm Management:** Severity-based alarm classes with recommended actions to reduce unnecessary downtime. Options to bypass or postpone non-critical alarms ensure continuous operation
- **Proven Automatic Setting Regulation (ASRi):** Built on a reliable algorithm continuously improved since 2002, the ACS-c 5 simplifies training and provides consistent, precise crusher performance
- **Seamless Plant Integration:** Full supervision and remote-control capabilities with support for over 500 signals and common communication protocols
- **Enhanced Reliability and Protection:** Unified system clock synchronization and secure communication monitoring ensure safe and efficient operation



# COMPUTERIZED HYDROPHONE CRUSHERS

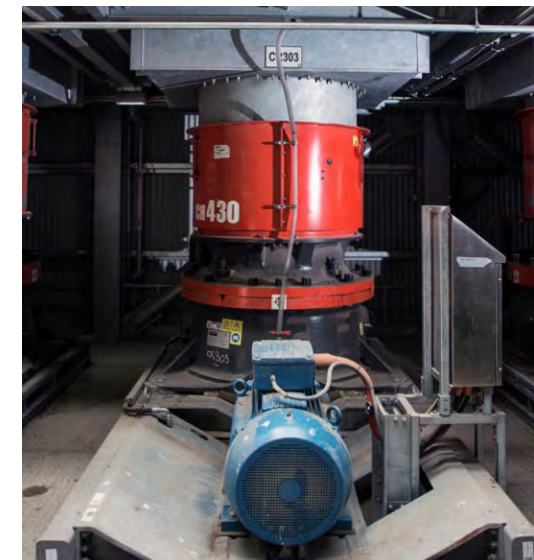
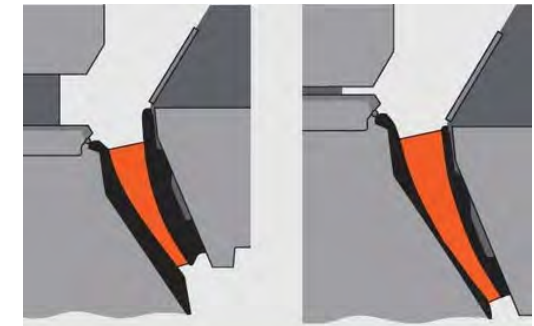
The ASRi computerized cone control optimizes the performance of your Sandvik cone crusher with the latest technology, allowing you to monitor your crushing equipment minute-by-minute. The ASRi intelligent crushing control system enables real-time adjustments, letting you monitor specific systems and make crusher settings on the fly.

User-friendly, the ASRi is operated via a touch screen and colour Graphical User Interface (GUI), complete with cables and transducers for easy connection checks. It also features a built-in instruction manual and multiple automated functions.

The ASRi system not only protects your crushing equipment from damage but also enhances productivity by maximizing product reduction and improving product shape. This is a feature that truly sets Sandvik cones apart from the competition.

Constant Liner Performance (CLP) technology, standard on all Sandvik cone crushers, offers several significant benefits, including constant feed acceptance capability, increased output, high-quality products, extended liner life, and lower total operating costs. With CLP, the nearly vertical profile in the feed opening area ensures that the chamber shape remains consistent throughout the liner's life.

This design keeps the feed size and chamber volume steady, allowing the crusher's production rate to remain unaffected even as the liners wear.



# ELRUS / SANDVIK CH660 HYDROCONE CRUSHER

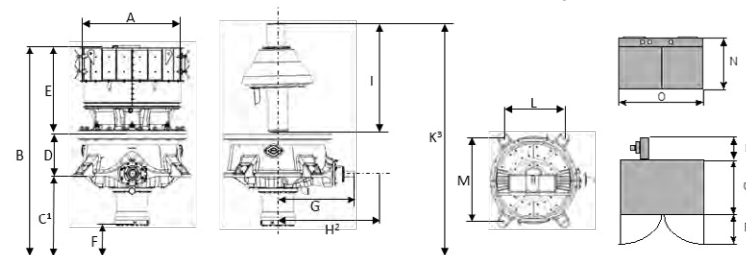
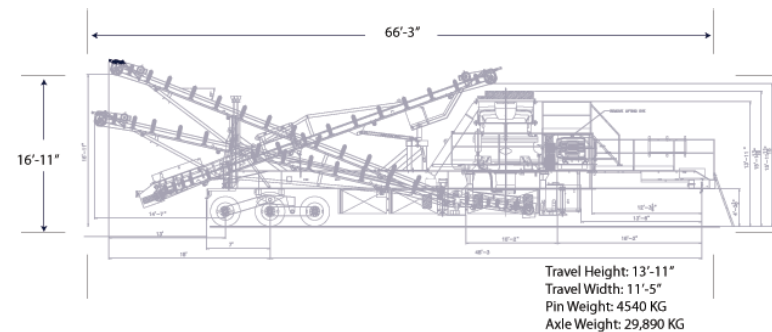


The Sandvik CH660 Cone Crusher features an advanced, compact design that provides high capacity relative to its size. It delivers high reduction efficiency and excellent product shape. With a range of chamber options, adjustable throw, and high motor power, the CH660 offers flexible application configurations to suit various installations.

Several standard crushing chambers are available, which can be adjusted to match production needs by selecting the right chamber and eccentric throw.

## FEATURES:

- Wide range of chambers for diverse feed acceptance
- Adjustable throw allows fine-tuning to meet desired performance
- Full process control
- Easy maintenance and high reliability



## CHASSIS — FEATURES:

- 24" WF strapped and cambered main frame with four blocking legs
- ELRUS heavy-duty HSS tri-axle walking beam suspension
- 36" feed conveyor with hydraulic side shift for operating and travel positions
- Tramp metal protection magnet on feed conveyor
- 48" return conveyor
- 12-volt hydraulic plant leveling with four 50,000 lb cylinders
- Floating sub frame for cone and motor with six rubber compression mounts
- Rock box style under-cone hopper
- Platform and stairway for cone inspection
- Complete guarding for cone drive and conveyors
- Fixed walkway on both sides of the cone and across the front of the chassis
- Full handrails and kickplates
- Retractable access ladder to chassis
- Clamp-on cone feed hopper with overflow chute to return conveyor
- Movable cable wraps mounted on handrails
- Air-to-oil cooler and positive air pump mounted on the front of the chassis

## CONE CRUSHER — FEATURES:

- Sandvik CH660 Hydrocone Crusher
- ASRi 2.0 computer-automated cone control
- 500 HP drive motor

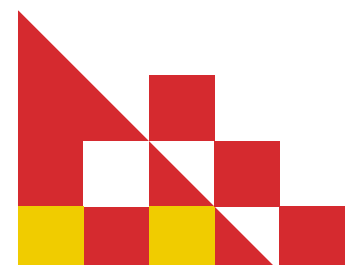
## OPTIONAL FEATURES:

- 16-wheel conveyor arrangement
- Hydraulic raise and lower on return conveyor
- Cone feed raise and lower on discharge end



## CAPACITIES & CONFIGURATIONS

Capacity	145 - 660 t.p.h.
CSS Range	13 - 51mm (.5" - 2")
Max Feed Size	50 - 275 mm (2"-10.9")



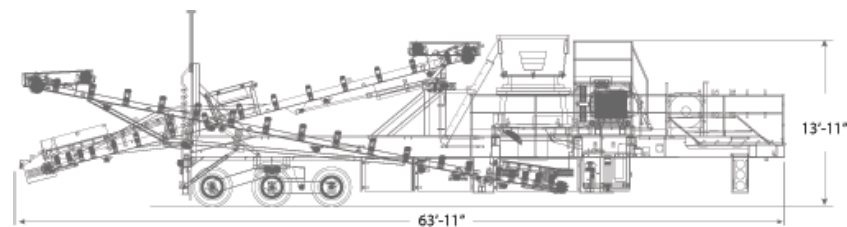
# ELRUS / SANDVIK CH840i HYDROCONE CRUSHER



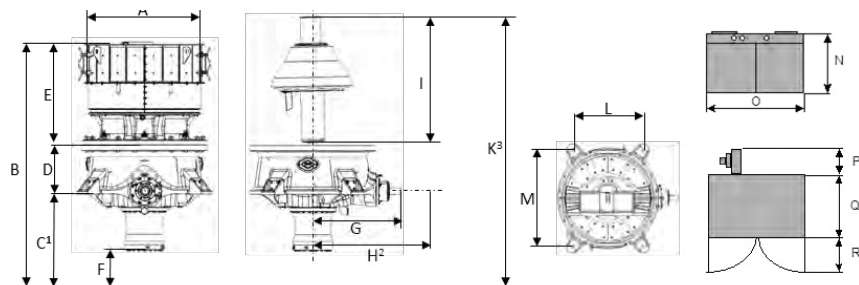
The Sandvik CH840i Compact Hydraulic Cone Crusher is designed to deliver high-quality aggregate production in a cost-effective manner, emphasizing flexibility, safety, ease of maintenance, and overall lower cost of ownership.

## FEATURES:

- High capacity relative to size
- ASRi Control System standard, automatically adjusting for variations in feed, pressure peaks, and wear
- Dump valve provides quick, safe tramp relief for uncrushable material
- Enhanced wear parts for longer lifespan per ton produced
- No plastic backing compound is required for manganese attachment
- Reduced noise emissions
- Maintenance-friendly design with easily accessible spare parts



**Travel Weights & Dimensions**  
Length: 63' Axle weight: 58,422 lbs (26,500 kg)  
Width: 11'-9" Pin Weight (Including truck): 38,490 Lbs (17,460kg)  
Height: 13'-11"



## CHASSIS — FEATURES:

- 21" WF strapped and cambered main frame with 3/4" x 6" flat bar
- ELRUS tri-axle walking beam suspension
- Four blocking legs
- Twelve 11:00 R x 22.5 Budd wheels with radial tires
- Air brakes, running lights, and mud flaps
- Floating sub-frame and motor mount for cone with six rubber compression mounts
- Platform, stairway, and guard for cone drive
- Fold-out guards between cone legs for under-conveyor protection
- Fixed walkway on both sides of the cone and across the front, with handrails and kick plates
- Access ladder to chassis
- Clamp-on cone feed hopper
- The plant is sandblasted, primed, and painted
- Drive and belt guarding
- Return roller guards on accessible rollers
- Cable wraps mounted on handrails
- Air-to-oil cooler with temperature control shutters
- Positive pressure air pump on the front of the chassis
- Bottle jack and jack stand

## CONE CRUSHER — FEATURES:

- Sandvik CH840i Hydrocone Crusher
- ASRi 2.0 computer automated cone control
- 450 HP drive motor

## OPTIONAL FEATURES:

- Hydraulic raise and lower on return conveyor
- Cone feed raise and lower on discharge end



CAPACITIES & CONFIGURATIONS			
CAPACITIES		CHAMBER CONFIGURATION	
Capacity	95-470 t.p.h.	F = Fine	MC = Medium Coarse
CSS Range	6-44 mm (.2" - 1.7")	MF = Medium Fine	C = Coarse
Max Feed Size	≤215 mm (≤8.5 in)	M = Medium	CX = Coarse Extra



# ELRUS / SANDVIK CH430 HYDRAULIC CONE CRUSHER



The Sandvik CH430 cone crusher features a hydraulically supported main shaft supported at both ends, ensuring stability and precision.

This robust crusher design includes an adjustable eccentric throw and a constant intake opening, making it suitable for high-capacity secondary applications, or high-reduction tertiary and pebble-crushing. Achieve optimal performance by selecting the Sandvik crushing chamber tailored to your specific needs.

## FEATURES:

- **Hydroset™ System:** Provides safety and setting-adjustment functions
- **ASRi™ System:** Automatically adapts the crusher to changing feed conditions
- **Unibody Mainframe:** Ensures maximum strength and minimizes maintenance requirements
- **Top-Down Serviceability:** Lifting from above for safer and quicker maintenance
- **Constant Liner Profile (CLP):** Maintains consistent performance throughout liner life



## CHASSIS — FEATURES:

- 18" WF strapped and cambered main frame with six blocking legs
- ELRUS heavy-duty HSS tandem-axle walking beam suspension
- 36" feed conveyor with hydraulic side-shift for operating and travel positions
- Tramp metal protection magnet on the feed conveyor
- 36" return conveyor
- 12-volt hydraulic plant levelling with two 50,000 lbs cylinders
- Floating sub-frame for cone and motor with four rubber compression mounts
- Rock box-style under-cone hopper
- Complete guarding for cone drive and conveyors
- Fixed walkway with handrails and kick plates on both sides of the cone and across the front of the chassis
- Retractable access ladder to chassis
- Clamp-on cone feed hopper with overflow chute to return conveyor
- Movable cable wraps mounted on handrails
- Air-to-oil cooler and positive air pump mounted on the front of chassis

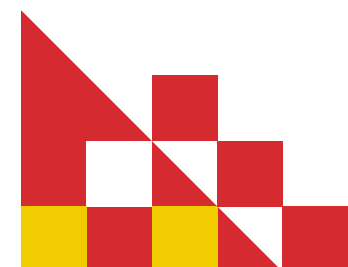
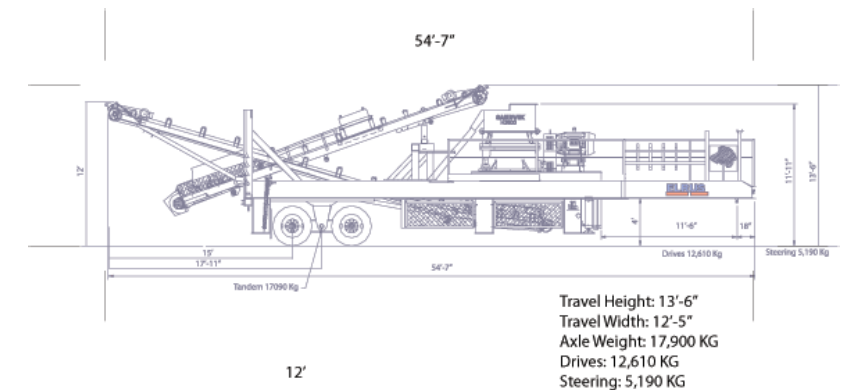


## CONE CRUSHER — FEATURES:

- Sandvik CH430 Hydrocone Crusher
- ASRi 2.0 automated cone control system
- 200 HP drive motor

## OPTIONAL FEATURES:

- Hydraulic raise and lower on the return conveyor



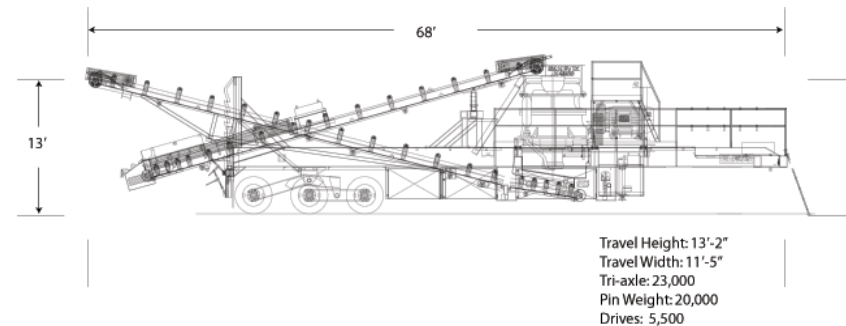
# ELRUS / SANDVIK CH440 HYDRAULIC CONE CRUSHER

The Sandvik CH440 Cone Crusher is an advanced design with a compact footprint and high capacity relative to its size. Offering excellent reduction efficiency and superior product shape, the CH440 is highly versatile, user-friendly, and productive.

With hydraulically adjustable CSS, computer automation, and multiple crushing chamber options, the CH440 adapts to changing production requirements through customizable chamber and eccentric throw selection. Ideal for secondary and tertiary crushing, this cone crusher is suitable for mobile, portable, and permanent installations, with a compact and easy-to-service design.

## FEATURES:

- **Versatile Chamber Options:** Offers a wide range of chambers with different feed acceptance
- **Adjustable Throw:** Fine-tunes performance to meet specific production needs
- **Full Process Control:** Enables comprehensive management of crushing operations
- **Easy Maintenance:** Designed for user-friendly access and upkeep
- **High Reliability:** Built for dependable, long-term performance



## CHASSIS — FEATURES:

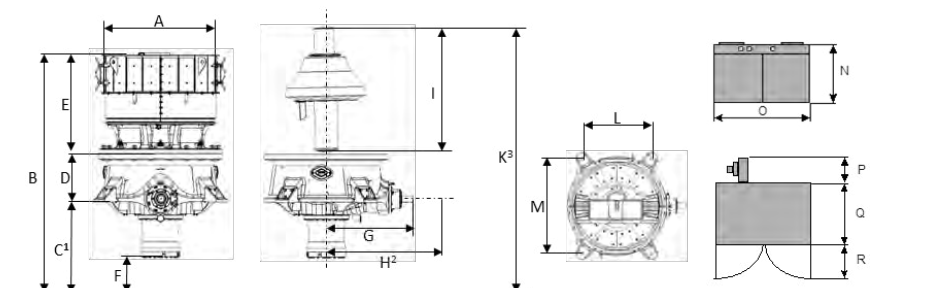
- 21" WF strapped and cambered main frame with six blocking legs
- ELRUS heavy-duty tri-axle walking beam suspension
- Floating sub-frame for cone and motor with six rubber compression mounts
- Rock box-style under-cone hopper
- Platform and stairway for cone inspection
- Complete guarding for cone drive and conveyors
- Fixed walkway with handrails and kick plates on both sides of the cone and across the front of the chassis
- Retractable access ladder to chassis
- Clamp-on cone feed hopper with overflow chute to return conveyor
- Movable cable wraps mounted on handrails
- Air-to-oil cooler and positive air pump mounted on the front of chassis
- 36" feed conveyor with hydraulic side-shift for operating and travel positions
- Tramp metal protection magnet on feed conveyor
- 42" discharge conveyor with hydraulic raise and lower on return conveyor
- 12-volt hydraulic plant leveling with two 50,000 lbs cylinders

## CONE CRUSHER — FEATURES:

- Sandvik CH440 Hydrocone Crusher
- ASRi 2.0 automated cone control system
- 300 HP drive motor

## OPTIONAL FEATURES:

- Hydraulic raise and lower cone feed on discharge end





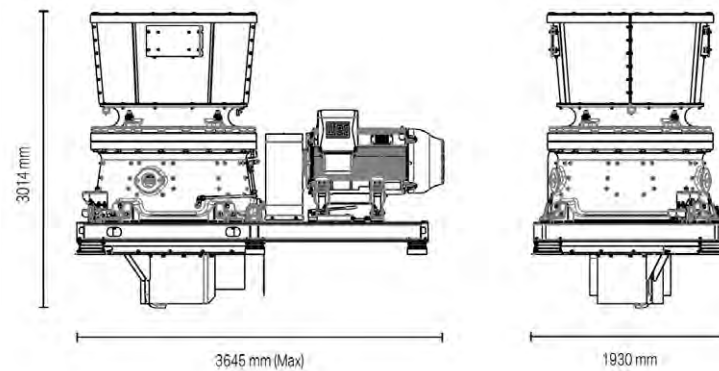
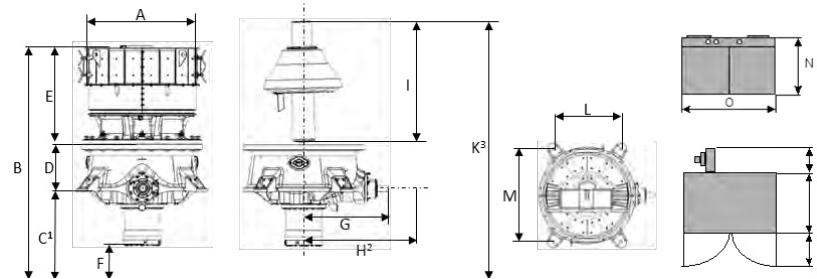
# ELRUS / SANDVIK CH830i HYDRAULIC CONE CRUSHER



The Sandvik CH830i is a technologically advanced, high-capacity mid-range cone crusher designed for secondary and tertiary crushing applications in mines or large quarries.

## FEATURES:

- **Reduced Operational Costs:** Lowers cost per tonne, maximizing return on investment
- **Easy Wear Part Replacement:** Enables quick and simple replacement of wear parts, keeping equipment productive with minimal downtime
- **Consistent Product Grading:** Provides easily controlled and uniform product output
- **New Generation World-Class Automation and Connectivity System (ACS):** Automatically adapts to varying feed conditions, ensuring peak performance 24/7
- **Hydroset™ System:** Offers safety and setting adjustment features for enhanced operation
- **Uni-body Mainframe:** Built without moving parts for optimal strength and fewer components requiring maintenance
- **Top Serviceability:** Lifting from above reduces risks and enables quicker, safer maintenance



## FEATURES (continued):

- **Adjustable Eccentric Throw:** Allows for precise balancing of capacity to match process needs, optimizing each crushing stage
- **Constant Liner Profile (CLP):** Maintains the feed opening and performance throughout the liner's entire service life
- **Wide Range of Crushing Chambers:** Suits all types of applications, from extra-coarse chambers for large intakes to extremely fine chambers for precision crushing
- **Mechanical Dump Valve for Tramp Iron Protection:** Reduces pressure peaks and mechanical stress, greatly improving crusher reliability
- **Full Lubrication Monitoring and Control:** Real-time monitoring of the lubrication system enhances uptime and reliability

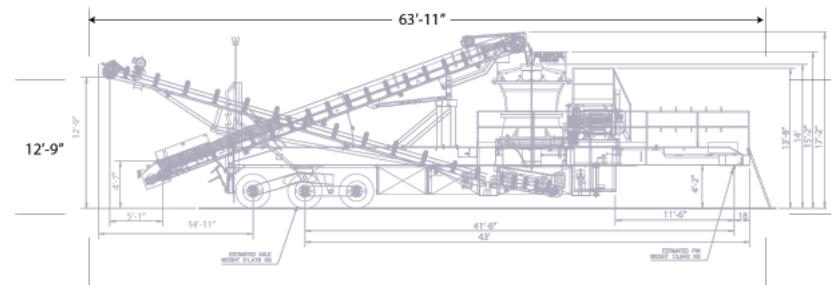


CAPACITIES & CONFIGURATIONS	
Capacity	61 - 283 mtp (67 - 311 stph)
CSS Range	5 - 41 mm (0 - 2 in.)
Max Feed Size	211 mm (8 in.)
Throw Range	24 - 52 mm (1 - 2 in.)



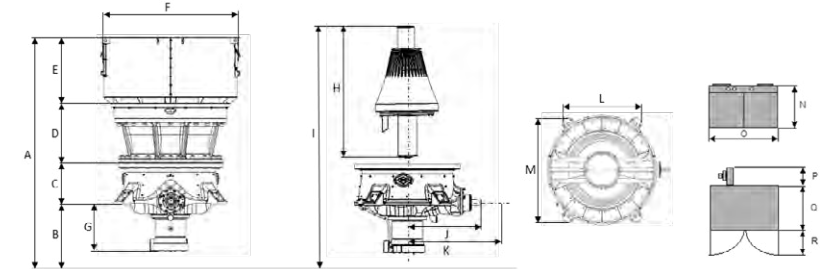
# ELRUS / SANDVIK CS440 GYROCONE

The Sandvik CS440 gyratory cone crusher is ideal for producers needing high feed capacity in a portable design that provides quick mobility, ease of use, superior particle shape, and maximum production efficiency.



## CHASSIS — FEATURES:

- 21" WF strapped and cambered main frame with six blocking legs
- ELRUS heavy-duty HSS tri-axle walking beam suspension
- 36" feed conveyor with hydraulic side-shift (top and bottom) for both operating and travel positions
- Tramp metal protection magnet on feed conveyor
- 42" discharge conveyor
- 12-volt hydraulic plant leveling with two 50,000 lbs cylinders
- Floating sub-frame for cone and motor with six rubber compression mounts
- Rock box-style under-cone hopper
- Platform and stairway for cone inspection
- Complete guarding for cone drive and conveyors
- Fixed walkway with handrails and kick plates on both sides of the cone and across the front of the chassis
- Retractable access ladder to chassis
- Clamp-on cone feed hopper with overflow chute to return conveyor
- Movable cable wraps mounted on handrails
- Air-to-oil cooler and positive air pump mounted on the front of the chassis



## GYROCONE — FEATURES:

- Sandvik CS440 Hydrocone Crusher
- ASRi 2.0 computer-automated cone control
- 300 HP drive motor

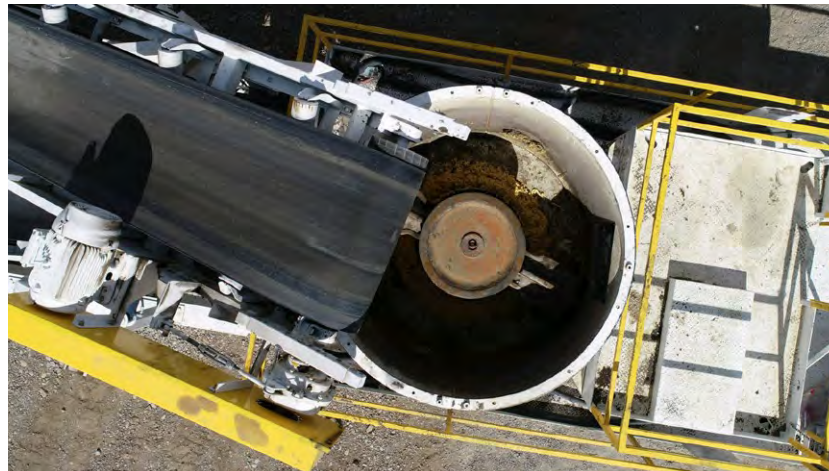
## OPTIONAL FEATURES:

- Hydraulic raise and lower on return conveyor
- Hydraulic raise and lower cone feed on discharge end



# ELRUS / SANDVIK CS660 GYROCONE

The Sandvik CS660 Gyrotory cone crusher is designed with a large intake capacity, adjustable throw, and high horsepower, allowing it to manage a wide range of primary (depending on feed size) or secondary crushing applications.

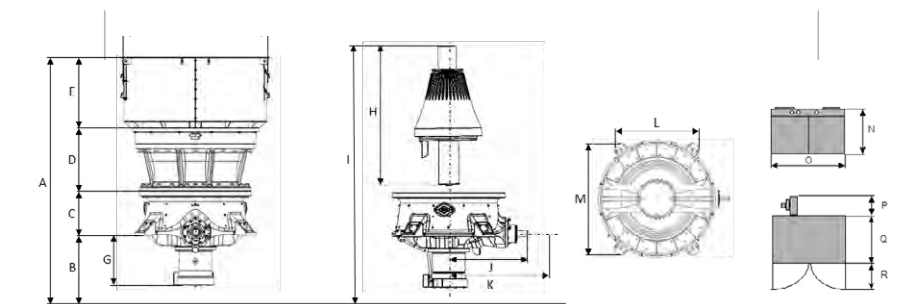
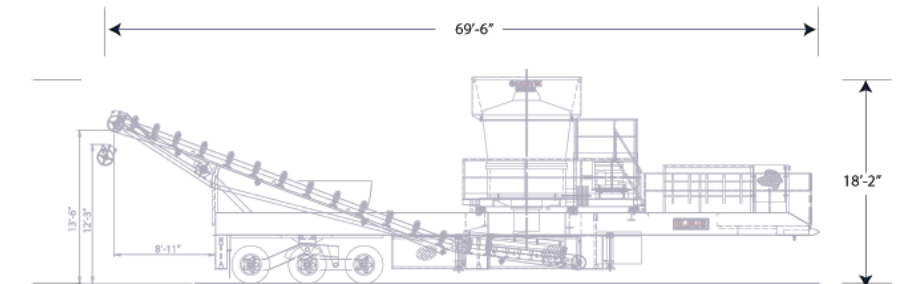


## CHASSIS — FEATURES:

- 4" WF strapped and cambered main frame with six blocking legs
- ELRUS heavy-duty HSS tri-axle walking beam suspension
- 48" discharge conveyor
- 12-volt hydraulic plant levelling with four 50,000 lbs cylinders
- Floating sub-frame for cone and motor with six rubber compression mounts
- Rock box-style under-cone hopper
- Platform and stairway for cone inspection
- Complete guarding for cone drive and conveyors
- Fixed walkway with handrails and kick plates on both sides of the cone and across the front of the chassis
- Retractable access ladder to chassis
- Clamp-on cone feed hopper
- Movable cable wraps mounted on handrails
- Air-to-oil cooler and positive air pump mounted on the front of the chassis
- Hydraulic raise and lower on the return conveyor

## GYROCONE — FEATURES:

- Sandvik CS660 Hydrocone Crusher
- ASRi 2.0 computer-automated cone control
- 400 HP drive motor

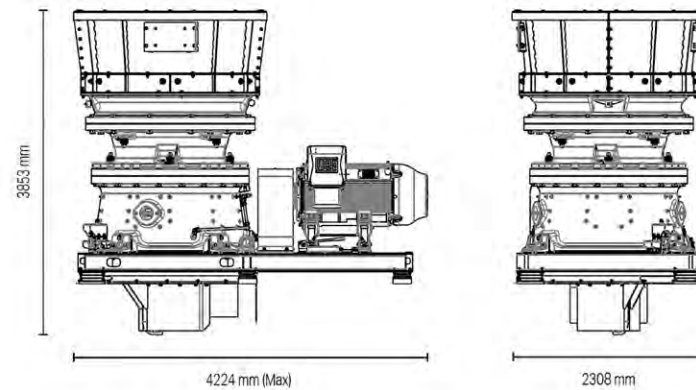


# ELRUS / SANDVIK CS840i GYROCONE



Sandvik's 800i-series stationary cone crushers redefine secondary-stage crushing with advanced engineering, high efficiency, and unparalleled reliability. The CS840i, a flagship model in this series, delivers up to 50% higher capacity and a 25% increased reduction ratio while significantly reducing recirculation by up to 50%. Designed for extreme flexibility, the CS840i boasts a wide range of Closed Side Settings (CSS), larger throws, and multiple crushing chambers to accommodate a variety of capacity and material requirements. Equipped with Sandvik's new-generation Automation and Connectivity System (ACS), this cone crusher ensures maximum 24/7 performance by continuously monitoring and optimizing crusher operations. Coupled with the Hydroset™ system for overload protection and precise setting adjustments, as well as a unibody mainframe for enhanced strength and reduced maintenance, the CS840i stands as a reliable, safe, and efficient solution for high-demand crushing applications.

The CS840i cone crusher, with a motor power of 330 kW (442 hp), a nominal capacity of 212–659 mtpm (234–726 stph), and a maximum feed size of 17", offers the perfect blend of high capacity, advanced technology, and ease of maintenance. For operators seeking top-tier performance and productivity, the CS840i is an exceptional choice.



## FEATURES:

- **Automation and Connectivity System (ACS):** Optimizes performance with real-time data monitoring and automatic adjustments
- **Hydroset™ System:** Ensures safety and allows for precise setting adjustments
- **Unibody Mainframe:** Provides optimal strength and reduces maintenance requirements
- **Top Serviceability:** Lifting from above minimizes risks, enabling quicker and safer maintenance
- **Adjustable Eccentric Throw:** Harmonizes crushing stages to balance capacity with process demands
- **Constant Liner Profile:** Maintains consistent feed opening and performance throughout liner life
- **Wide Range of Crushing Chambers:** Tailored to various applications, from extra coarse to extremely fine crushing
- **Mechanical Dump Valve for Tramp Iron Protection:** Reduces pressure peaks and enhances crusher reliability
- **Advanced Lubrication Monitoring:** Real-time monitoring for extended oil life and increased uptime



# CLOSED CIRCUIT CRUSHING PLANT



## CHASSIS — FEATURES:

- ELRUS HD 16-wheel suspension
- Six blocking legs
- Air brakes, running lights, and mud flaps
- Fixed walkway on both sides of cone with handrails and kick plates
- Walkways and ladders on both sides of the screen with front crossover
- Four access ladders to the chassis
- Hydraulic raise-and-lower screen sub-frame

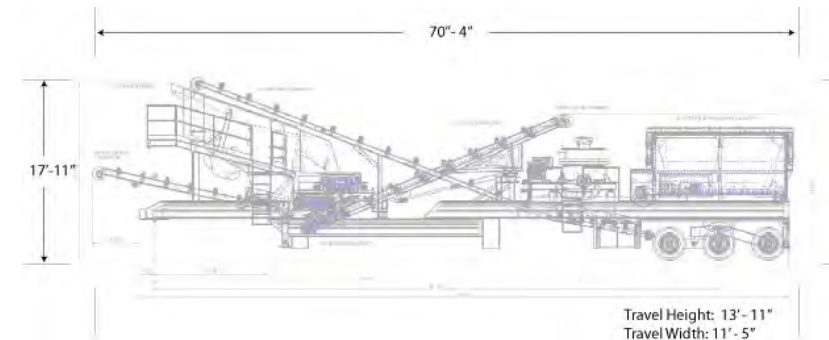
## Hydraulic Levelling System:

- Six 50,000 lbs 6" x 35" hydraulic levelling jacks

## FEEDER MODULE HOPPER AND FEED BELT — FEATURES:

### Hopper:

- 8' x 13' self-relieving hopper assembly with 1/4" plate construction
- Approximately 15 cubic yard capacity
- Folding wing wall extensions
- Cantilever hydraulic side dumping Grizzly (dumps 4' away from the plant)
- Remote dump control switch for tower



### Feed Belt:

- 36" x 14' removable belt feeder cartridge
- Hydraulic grease actuated take-ups
- 3-ply 600 1/4" Goodyear Pylon Plus conveyor belt with vulcanized splice
- Integral drive system
- 10 HP Torspec variable speed drive with remote speed control
- Eurodrive gear reducer with 63:1 reduction
- #140 chain drive to head pulley
- Pit Viper belt scraper

## SCREEN MODULE — FEATURES:

### ELRUS 6' x 14' 3-Deck High-Capacity Screen:

- Multi sloped design

### Discharge Chutes:

- Material confinement chute system
- Flop gate to divert material directly to cone or to second cross conveyor

## SANDVIK CH430 CONE CRUSHER — FEATURES:

- ASRi 2.0 computer-automated cone control
- 200 HP TEFC motor at 1800 RPM with sheaves and v-belts
- Floating sub-frame and motor mount for cone with four rubber compression mounts
- Clamp-on cone feed hopper with overflow chute to return conveyor
- Guard for cone drive
- Air-to-oil cooler with temperature control shutters
- Positive pressure air pump mounted on chassis

## CONVEYORS — FEATURES:

### 36" x 48' Under Cone / Screen Feed Conveyor:

- 16" 20 HP Vandergraf motorized head pulley
- 12" mine duty Chevron tail pulley with 2-7/16" Sealmaster MP ball bearings
- Hydraulic grease actuated take-ups
- 20° 5" CEMA C Troughing idlers under cone hopper
- 28° and 35° 5" CEMA C Troughing idlers at 36" centers
- 5" CEMA C self-cleaning return rollers at 10' centers
- Rock box style under cone hopper with bolt-on 1" wear plates
- Goodyear Pylon 3-ply 3/16" x 1/16" conveyor belt with vulcanized splice
- V plow and full tail pulley guarding

### 30" x 29' Cone Return Conveyor:

- 16" 10 HP Vandergraf motorized head pulley
- 12" mine duty Chevron tail pulley with 2-7/16" Sealmaster MP ball bearings
- Hydraulic grease actuated take-ups
- 20°, 28°, and 35° 5" CEMA C Troughing idlers with impact sets
- 5" CEMA C self-cleaning return rollers at 9' centers
- Rock box style receiving hopper with bolt-on 1" wear plates
- Goodyear Pylon 3-ply 3/16" x 1/16" conveyor belt with vulcanized splice
- V plow and full tail pulley guarding
- Hydraulic side-shift for operating and travel positions
- Hydraulic front-back shift for operating and travel positions with two cylinders and control valve

### 30" x 17' Underscreen Conveyor – Adjustable Height:

- 10 HP Vandergraf motorized head pulley
- 12" mine duty Chevron tail pulley with 2-7/16" Sealmaster MP ball bearings
- Hydraulic grease actuated take-ups
- 3-ply 3/16" x 1/16" Goodyear Pylon conveyor belt with vulcanized splice
- Belt scraper and V plow

### Two 30" x 12' - 6" Cross Conveyors:

- 7.5 HP Vandergraf motorized head pulley
- 12" mine duty Chevron tail pulley with 2-7/16" Sealmaster MP ball bearings
- Hydraulic grease actuated take-ups
- 3-ply 3/16" x 1/16" Goodyear Pylon conveyor belt with vulcanized splice V plow

### Tramp Metal Protection Magnet:

- Suspended above feed conveyor on a removable frame



# CH430 SELF-CONTAINED CONE CRUSHER



The CH430 Self-Contained Cone Crusher is designed for maximum efficiency, incorporating a powerful 200 HP Sandvik CH430 Hydrocone crusher with automated control, in/out conveyors, and a fully equipped control center. Perfect for versatile, mobile operations. This self-contained cone crusher plant provides a complete solution for efficient crushing operations, suitable for producers requiring both mobility and powerful performance in a compact format.

## FEATURES:

**Cone Crusher:** Sandvik CH430 200 HP Hydrocone Crusher with ASRi Automated Cone Control

**Fuel Capacity:** ELRUS 3,600 Litre / 800 Gallon Fuel Tank

**Feed Conveyor:** 36" x 27' feed conveyor with tramp metal protection magnet

**Return Conveyor:** 36" x 37' return conveyor

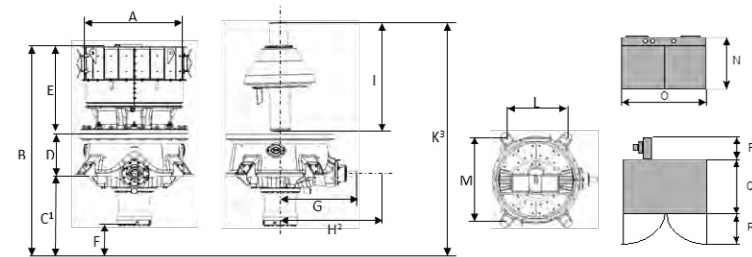
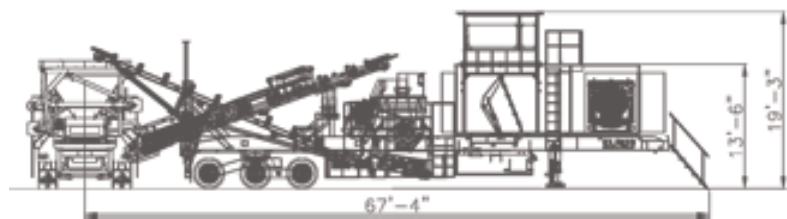
**Hydraulic Leveling System:** Two-cylinder "run-on" hydraulic levelling system

**Control Center:** Chassis-mounted control center enclosure with electrical switchgear, Genset, and tower

**Control Tower:** ELRUS 4 1/2' x 8' control tower with an inside height of 6' - 8"



TRAVEL WEIGHTS & DIMENSIONS	
Axle	55787 lb (19,472 kg) Pin: 42929 lb (19,472 kg)
Length	65'-7"
Height	13'-10"
Width	12'-4"



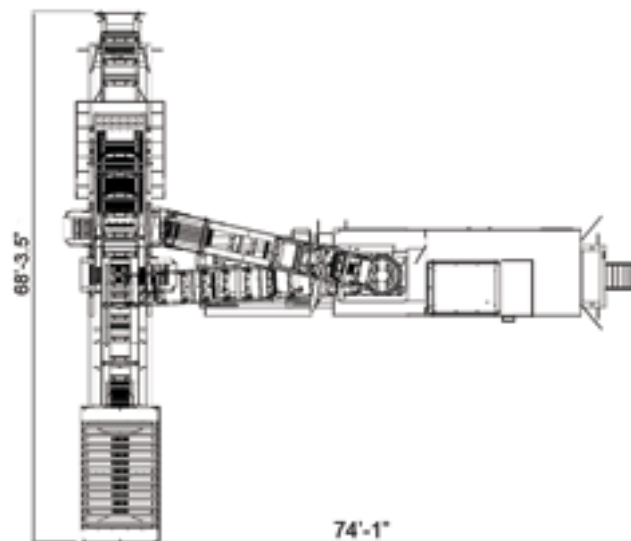
# SELF-CONTAINED COMPACT CRUSHING SPREAD

Developed with portability in mind, the Self-Contained Compact Crushing Spread is designed for efficiency, mobility, and lower cost of ownership. Built on two chassis, this plant increases in-spec uptime production and reduces maintenance and downtime. Its compact design allows it to operate in locations where larger crushing spreads would not be feasible.

The Self-Contained Compact Crushing Spread combines ELRUS's multi-slope screen technology with Sandvik's smart crusher automation, delivering maximum efficiency in a smaller, portable footprint without sacrificing production volumes.

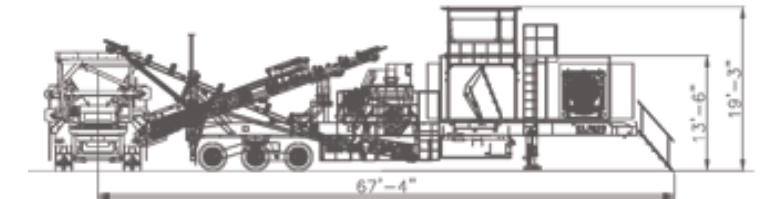
## FEATURES:

- Consists of an ELRUS MS612 6' x 12' 3-Deck Feeder Screen Plant and a Sandvik 200 HP CH430 Cone Crusher with ASRi Automated Cone Control
- Compact size enables operation in confined spaces with high production efficiency
- Designed for quick mobilization with hydraulic levelling and adjustable onboard feed and discharge conveyors
- ASRi 2.0 control system provides a user-friendly graphical interface, automating crusher functions for optimal reduction rates, particle shape, and equipment protection
- Easy transport with only two chassis to tow
- Smaller footprint than traditional crushing spreads
- Rapid setup and operation within two hours



## CH430 SELF-CONTAINED CONE CRUSHER — FEATURES:

- Sandvik CH430 200 HP Hydrocone Crusher with ASRi Automated Cone Control
- 3,600 Litre (800 Gallon) Fuel Tank
- 36" x 27' Feed Conveyor with Tramp Metal Protection Magnet
- 36" x 37' Return Conveyor
- Two-Cylinder Hydraulic Leveling System
- Control Center Enclosure with Tower, Switchgear, and Genset
- ELRUS 4.5' x 8' Control Tower (inside height of 6' - 8")



## TRAVEL WEIGHTS & DIMENSIONS

Axle	55787 lb (19,472 kg) Pin: 42929 lb (19,472 kg)
Length	65' - 7"
Height	13' - 10"
Width	12' - 4"

## MS612 6' x 12' 3-DECK FEEDER SCREEN — FEATURES:

- 15 Cubic Yard Self-Relieving Hopper
- Hydraulic Side Dump Grizzly
- 36" Feed Belt with Integral Drive System
- ELRUS MS612 6' x 12' 3-Deck Screen
- 42" Under-Screen Conveyor
- Two 36" Cross Conveyors
- Hydraulic Levelling Package

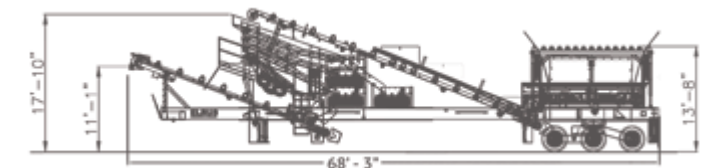
## CHASSIS CONFIGURATIONS:

### Chassis #1: ELRUS Feeder-Screen:

- Screen: ELRUS MS612 6' x 12' 3-Deck High-Capacity Multi-Slope Screen
- Feeder: 36" Feeder for optimal material handling

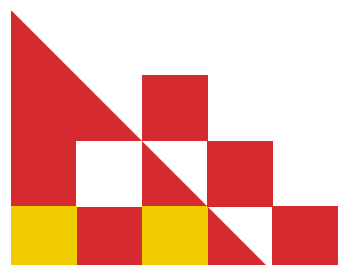
### Chassis #2: Sandvik CH430 Cone Crusher:

- Crusher: Sandvik CH430 Cone Crusher with 36" in/out conveyors
- Control Center: Enclosure with tower, switchgear, and 500kW Genset



## TRAVEL WEIGHTS & DIMENSIONS

Axle	51,177 lb (23,213 kg) Pin: 33,605 lb (15,243kg)
Length	69'
Height	14'
Width	12' - 5"





# PARTS AND SERVICE

ELRUS offers a full range of parts and consumables, supported by a team of experts ready to get your equipment back to peak performance. Our skilled service specialists provide 24/7 support, on-site repairs, and rebuilds, ensuring you stay up and running wherever you are.



 | [ELRUSAggregateSystems](#)     | [ELRUSAggregateSystems](#)     | [ELRUSAggregateSystems](#)     | [ELRUSAggregateSystems](#)

**ELRUS AGGREGATE SYSTEMS**  
**HEAD OFFICE:**  
4409 Glenmore Trail, SE  
Calgary AB T2C 2R8  
(403) 279-7741 1-888-535-7877

**NISKU, AB**  
1302 10 Street  
Nisku, AB  
T9E 8K2  
(780) 980-5600

**SASKATOON, SK**  
#100-737 66 Street  
Saskatoon, SK  
S7P 0E4  
(306) 668-0890

**WINNIPEG, MB**  
67007 Sturgeon  
Road 8 E, Rosser, MB  
R4B 0B2  
(204) 888-5588

**CAMBRIDGE, ON**  
170 Turnbull Court  
Cambridge, ON  
N1T 1J2  
(519) 624-6500

**AYLMER, ON**  
702 Talbot Street  
West Aylmer, ON  
N5H 2V1  
(226) 777-8668

**CHEHALIS, WA**  
173 N Hamilton Rd,  
Chehalis, WA 98532  
United States  
(253) 891-0888