

IMPACT CRUSHING





Since its founding in 1975, **ELRUS Aggregate Systems** has been a leading name in the aggregate and mining industries, specializing in the design and manufacture of portable processing and handling systems. With a reputation for quality and innovation, ELRUS serves customers across Canada and the United States, providing comprehensive solutions tailored to meet their unique needs.

OUR EXPERTISE INCLUDES:

- Portable crushing and screening equipment to deliver efficient, high-performance solutions.
- Conveying systems designed for reliability and optimal operation.
- A robust inventory of replacement parts and dedicated customer support to minimize downtime and ensure smooth operations.

WHAT SETS ELRUS APART:

- **Uncompromising quality:**
Every piece of equipment is built to last, delivering the durability and performance our customers expect.
- **Customer-driven solutions:**
We prioritize your success, offering tailored systems to optimize your operation.
- **Ethical business practices:**
We pride ourselves on fostering trust and long-term relationships with our customers and partners.

ADDITIONAL SERVICES:

- 24/7 customer support to address urgent needs and minimize downtime.
- Custom equipment design and layout tailored to your project's requirements.
- Fuel savings and operational efficiency analysis to maximize your bottom line.

CONTENTS

ELRUS Impact Crushers4
Vertical Shaft Impact Crushing Plants
Horizontal Shaft Impactors

ELRUS IMPACT CRUSHERS

ELRUS Impact Crushing Plants are equipped with advanced Sandvik Horizontal Shaft Impact (HSI) crushers for primary and secondary crushing, as well as Vertical Shaft Impact (VSI) crushers for tertiary and quaternary applications. These crushers are designed with state-of-the-art technology, offering exceptionally high reduction ratios, outstanding product shape, impressive productivity, and low operational wear. With easy maintenance and a low cost per ton, they provide a reliable, efficient solution for a variety of crushing needs.

Sandvik's Prisec™ crusher range offers incredible versatility, making it ideal for both quarrying and recycling applications. It can operate seamlessly in either primary or secondary crushing modes, adapting effortlessly to changing production demands. The patented design ensures superior adaptability and performance, giving producers the flexibility to meet evolving requirements.

The Sandvik CV200 series VSI crushers provide an economical and reliable solution for autogenous crushing. These crushers are engineered to reduce maintenance requirements significantly while prioritizing improved safety and health considerations. With consistent performance and reduced downtime, they are a practical, cost-effective option for any crushing operation.



VERTICAL SHAFT IMPACT CRUSHING PLANTS



Our vertical shaft impact (VSI) crushing plants feature Sandvik VSI crushers, renowned for their advanced, reliable, and low-vibration design. These machines are well-known for increasing productivity and minimizing downtime, making them an ideal choice for demanding crushing applications.

The Sandvik CV200 series VSI crushers are third- or fourth-stage crushers developed specifically for the aggregate, mining, and recycling industries. With six models available, they can handle tonnages ranging from 10 to 600 tph. This series is suited for a variety of applications, including manufactured sand, premium-shaped concrete and asphalt material, recycling, and the processing of mining and industrial minerals.

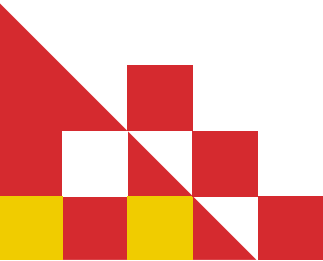
The CV200 series employs the autogenous “rock-on-rock” crushing technique, delivering several key benefits: consistent product gradation even as rotor wear parts wear, extremely low contamination rates due to the absence of wear parts in direct rock crushing, and reduced operational costs.

The Sandvik VSI also features a patented integrated feed tube replacement system, addressing a historical challenge. Traditionally, removing and replacing the rotor feed tube required mobile lifting gear or costly hydraulic systems. Sandvik's design now allows one individual to replace the feed tube via the crusher inspection door, dramatically reducing maintenance time and costs.

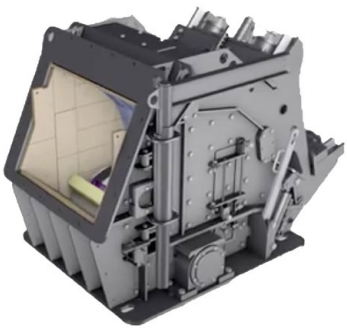


FEATURES:

- **Superior Particle Shape:** Produces better particle shape with extremely low flake and elongation values
- **Higher Product Yield:** Results in more salable material
- **Reduced Power Consumption:** Operates more efficiently reducing energy costs
- **Lowest Cost Per Ton:** Delivers exceptional value for high volume operations
- **Minimal Downtime:** Reliable design ensures extended operational periods without interruption
- **Optional Bi-Flow® Acceleration Slides:** The patented Bi-Flow acceleration slides effectively process sticky, flaky, and elongated feed materials. This optional component ensures the Bi-Flow system operates efficiently, delivering the lowest possible operational cost and the greatest possible throughput



HORIZONTAL SHAFT IMPACTORS



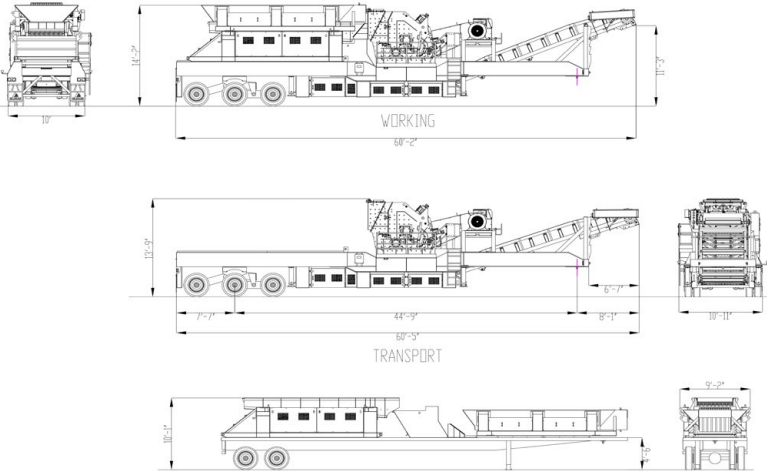
Our horizontal shaft impact (HSI) crushing plants are outfitted with Sandvik Prisec™ crushers. The Prisec™ range can be configured for quarrying or recycling, in either primary or secondary mode. Its patented design offers adaptability, keeping pace with changing production needs.

Two uniquely designed extra heavy-duty curtains enable Prisec™ crushers to deliver throughput and reduction ratios that typically require three curtains on other crushers. Fewer parts and less maintenance reduce overall costs. The curtains are infinitely adjustable using Sandvik's patented hydraulic adjustment/braking system and a standard hydraulic power pack.

Crusher blockages have historically caused downtime and safety risks, especially in primary configurations. The Prisec™ crusher eliminates these issues.

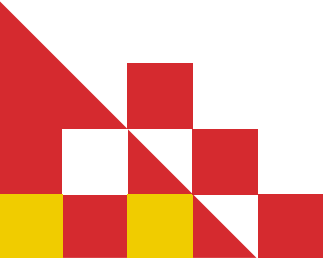
The second generation of compact horizontal impact crushers from Sandvik delivers low capital cost, optimal performance, and excellent cubical product shape—ensuring the lowest operating cost per ton across a wide range of materials and applications.

The patented, modular Sandvik CI 711/712 crusher allows a single base unit to be configured as either a primary or secondary crusher, making it easily adaptable to evolving production demands.



FEATURES:

- **Great Reduction Ratios:** Revolutionary chamber design allows for greater reduction ratios with two curtains, unlike competitors requiring three-curtain crushers
- **Reduced Maintenance Costs:** Fewer parts and less maintenance required due to the advanced design
- **Hydraulic Curtain Adjustment:** Equipped with infinite hydraulic curtain adjustment and brake positioning system to relieve pressure and reset settings for uncrushable objects
- **No Power Required During Normal Operation:** Saves operating power and reduces overall power consumption
- **No Crusher Blockage:** Eliminates blockages, reducing downtime and health safety risks
- **Compact and Modular Design:** The CI 711/712 crushers are highly adaptable, offering configurations for both primary and secondary applications
- **Low Capital Cost Solutions:** Designed for economical operation and low cost per ton of production





PARTS AND SERVICE

ELRUS offers a full range of parts and consumables, supported by a team of experts ready to get your equipment back to peak performance. Our skilled service specialists provide 24/7 support, on-site repairs, and rebuilds, ensuring you stay up and running wherever you are.



www.elrus.com



| ELRUSAggregateSystems



| ELRUSAggregateSystems



| ELRUSAggregateSystems



| ELRUSAggregateSystems

ELRUS AGGREGATE SYSTEMS

HEAD OFFICE:

4409 Glenmore Trail, SE
Calgary AB T2C 2R8
(403) 279-7741 1-888-535-7877

NISKU, AB

1302 10 Street
Nisku, AB
T9E 8K2
(780) 980-5600

SASKATOON, SK

#100-737 66 Street
Saskatoon, SK
S7P 0E4
(306) 668-0890

WINNIPEG, MB

67007 Sturgeon
Road 8 E, Rosser, MB
R4B 0B2
(204) 888-5588

CAMBRIDGE, ON

170 Turnbull Court
Cambridge, ON
N1T 1J2
(519) 624-6500

AYLMER, ON

702 Talbot Street
West Aylmer, ON
N5H 2V1
(226) 777-8668

CHEHALIS, WA

173 N Hamilton Rd,
Chehalis, WA 98532
United States
(253) 891-0888