

# JAW CRUSHING





# CONTENTS

**Jaw Crushing . . . . . 4**

**Overhead Eccentric  
Jaw Crushers. . . . . 6**

**Jaw Plants . . . . . 7**

ELRUS / Sandvik CJ412 Jaw Crusher

ELRUS 2054 Jaw Crusher

ELRUS 2236 Jaw Crusher

ELRUS 2442 Jaw Crusher

ELRUS 3042 Jaw Crusher

ELRUS 3054 Jaw Crusher

ELRUS 2036 Feeder Screen Jaw Crusher

Screen-Jaw Plants

Since its founding in 1975, **ELRUS Aggregate Systems** has been a leading name in the aggregate and mining industries, specializing in the design and manufacture of portable processing and handling systems. With a reputation for quality and innovation, ELRUS serves customers across Canada and the United States, providing comprehensive solutions tailored to meet their unique needs.

**OUR EXPERTISE INCLUDES:**

- Portable crushing and screening equipment to deliver efficient, high-performance solutions.
- Conveying systems designed for reliability and optimal operation.
- A robust inventory of replacement parts and dedicated customer support to minimize downtime and ensure smooth operations.

**WHAT SETS ELRUS APART:**

- **Uncompromising quality:**  
Every piece of equipment is built to last, delivering the durability and performance our customers expect.
- **Customer-driven solutions:**  
We prioritize your success, offering tailored systems to optimize your operation.
- **Ethical business practices:**  
We pride ourselves on fostering trust and long-term relationships with our customers and partners.

**ADDITIONAL SERVICES:**

- 24/7 customer support to address urgent needs and minimize downtime.
- Custom equipment design and layout tailored to your project's requirements.
- Fuel savings and operational efficiency analysis to maximize your bottom line.





## JAW CRUSHING

Jaw crushers are widely utilized across the aggregate, mining, and recycling industries due to their robust construction, simplicity in design, and versatility. Their large physical size and rectangular feed openings allow them to handle larger feed sizes compared to other crusher types, making them a preferred choice for primary crushing applications. With the ability to crush various materials, including hard and abrasive stones, jaw crushers are an essential component in many crushing circuits. Typical applications include stone crushing, concrete crushing, asphalt crushing, and ore crushing.

The jaw crusher operates on the principle of compression, crushing rock by squeezing it between two jaws—one stationary and one movable. The movable jaw, also known as the Pitman, is connected to an eccentric shaft that creates a reciprocating motion. As rock enters the crushing chamber from the top, it progresses downward through the narrowing chamber. Once the material is caught between the two jaws, it is compressed until it fractures.



# ELRUS OVERHEAD ECCENTRIC JAW CRUSHERS



ELRUS manufactures single-toggle, Heavy Duty Overhead Eccentric Jaw Crushers that are designed and engineered to exacting specifications. Built with heavy-duty jaw boxes and cast Pitman components, these crushers are ruggedly constructed and stress-relieved before final machining to ensure durability and reliability.

ELRUS jaw crushers are available in various sizes, including 1536, 2036, 2236, 2442, 2054, 3042, and 3054, providing flexibility to meet a wide range of production needs.

## JAW PLANT FEEDERS — FEATURES:

- Hydraulic jaw adjustment
- Tri-axle walking beam suspension
- Hydraulic levelling
- Adjustable discharge conveyor
- Impact bed under the jaw and bypass chute
- Hydraulic Dump Grizzly with remote control

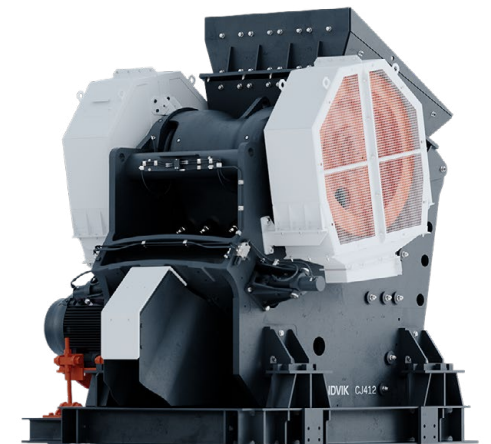
## OPTIONAL FEATURES:

- Optional screen module
- Jaw sizes ranging from 1536 to 3054
- Rear discharge fines conveyor
- Variable speed frequency control on the feeder

## JAW CRUSHERS — FEATURES:

- **Welded Steel Frame Construction** Built with 2–2.5" steel plate, the welded frame is stress-relieved to ensure long lasting performance and trouble-free operation
- **Cast Steel Pitman:** The Pitman is constructed from 1.75–2" cast steel and precision-machined for close tolerance fit. It features a replaceable plate that protects the barrel from damage caused by oversized or slab material
- **Bolt-on Pitman Lip:** All ELRUS jaw crushers feature bolt-on manganese support lips, making maintenance and replacement during liner changes easy and efficient
- **Spherical Roller Bearings:** Both Pitman and frame bearings are equipped with off-the-shelf spherical roller bearings. The Pitman bearings are oil-lubricated, while the frame bearings are grease-lubricated from a central location, eliminating the need for shutdowns during lubrication
- **Flywheels:** Crushers are equipped with one-piece cast flywheels available in 48" or 60" diameter sizes for smooth operation and reduced vibration
- **Hydraulic Jaw Adjustment with Shims:** Jaw settings can be easily adjusted using a standard hydraulic pump, allowing the operator to add or remove shims as needed for the desired setting. An optional hydraulic toggle with tramp iron relief system is also available, replacing the toggle plate to allow uncrushable material to pass through safely
- **Replaceable Parts:** ELRUS jaw crushers are designed with maintenance in mind, featuring replaceable components such as the bolt-on toggle slide with wear plates and replaceable lower toggle seats for both the stationary and movable jaw manganese

# ELRUS / SANDVIK CJ412 JAW CRUSHER

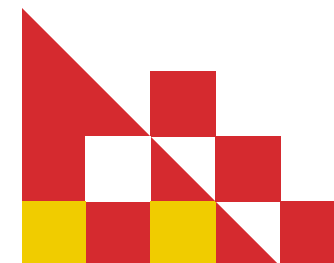
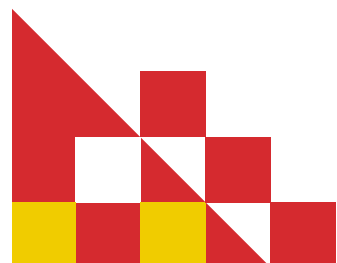
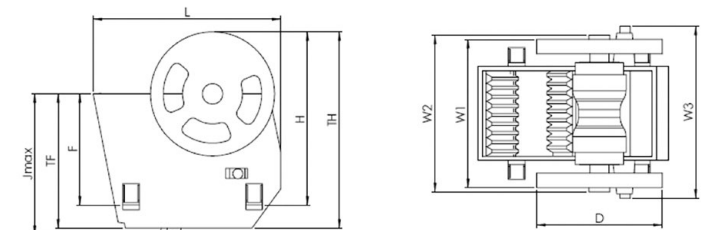


Sandvik's stationary jaw crushers are a testament to their expertise in designing machines that maximize productivity while minimizing costs. The Sandvik CJ412 single-toggle jaw crusher is a prime example of this dedication, engineered to handle tough applications with ease. Its heavy-duty design, deep, symmetrical crushing chamber, and optimized nip angle ensure superior performance, high production capacity, and efficient size reduction. This jaw crusher offers the peace of mind you need to maintain consistent uptime and control operational costs.

With a feed opening of 47" x 33", a capacity of 165-790 mtp (182-871 stph), and a powerful 132 kW (200 hp) motor, the Sandvik CJ412 is the ideal choice for operations that demand high productivity and efficiency without compromising reliability.

## FEATURES:

- **High Capacity and Low Cost per Ton:** Designed for primary applications where resizing is critical, offering efficient material flow and high reduction ratios
- **Heavy-Duty Design:** Welded frame ensures equal strength in all directions and excellent durability against shock loads
- **Deep Symmetrical Crushing Chamber:** Combined with an optimized nip angle, it maximizes size reduction and production capacity
- **Wider Intake Opening:** Handles larger feed material for increased versatility
- **Reliable Performance:** Proven technology and design for safe and easy operation and maintenance





# ELRUS 2054 JAW CRUSHER



The ELRUS 2054 Primary Jaw Plant is a powerful, heavy-duty crusher designed for the most demanding crushing conditions. Built for big jobs, it offers high production capabilities and ease of maintenance, making it the ideal choice for high-volume gravel producers.

## FEATURES:

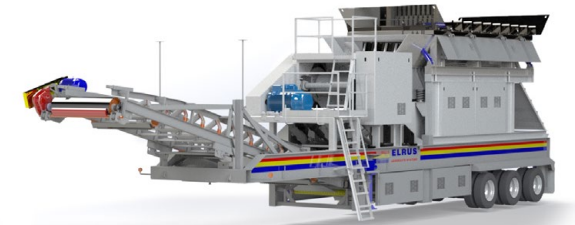
- 48" x 20' Vibrating Grizzly Feeder (VGF) with integral motor mount
- Hydraulic jaw adjustment (optional full hydraulic adjustment and tramp iron protection available)
- The hopper and feeder are easily removable for transport
- Heavy-duty tri-axle walking beam suspension for stability
- Hydraulic leveling for quick setup
- 60" hydraulic raise-and-lower discharge conveyor for optimized material handling
- Impact bed under the jaw crusher and bypass chute for enhanced durability

## OPTIONAL FEATURES:

- Available in diesel power for remote applications
- Side or end dump Grizzly options with adjustable bars
- Rear discharge fines conveyor for additional material handling option



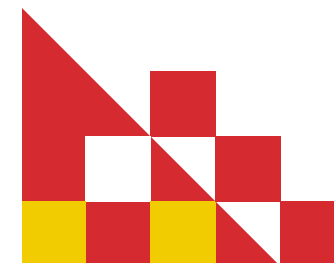
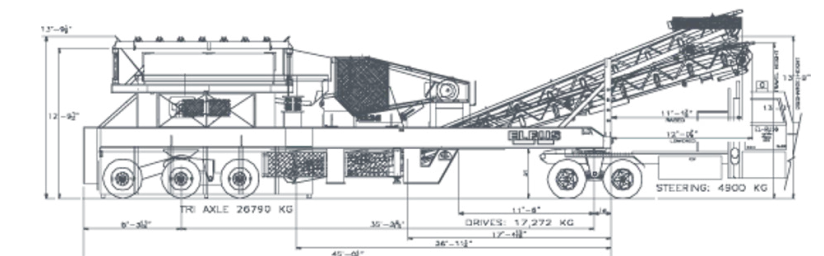
# ELRUS 2236 JAW CRUSHER



The ELRUS 2236 Primary Jaw Plant is a compact yet robust heavy-duty overhead eccentric jaw crusher. It is ideal for contractors who require the features and performance of a larger crusher but in a smaller, more portable size. The 2236 is versatile and can also be configured as a Jaw Screen or as part of a Feeder Screen Jaw Plant.

## FEATURES:

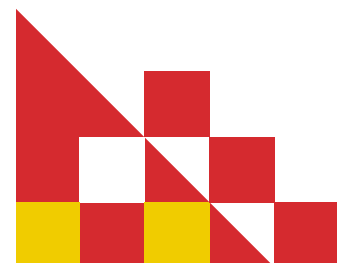
- Travel height: 13' - 9 1/2" (Grizzly Travel height: 13' - 9 1/2" [Grizzly removed])
- 36" x 16' VGF (Vibrating Grizzly Feeder) with integral motor mount
- Hydraulic jaw adjustment for quick and easy settings
- Heavy-duty tri-axle walking beam suspension
- Hydraulic chassis leveling for fast setup
- Adjustable discharge conveyor for flexibility
- Impact bed under the jaw crusher and bypass chute for durability





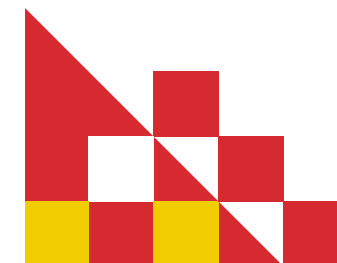
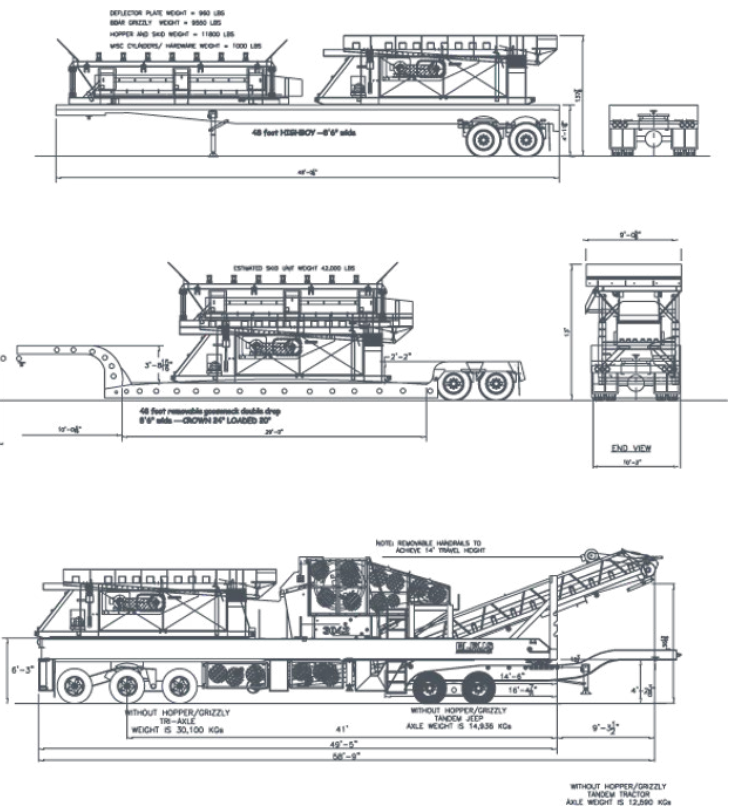
- 
- TRANSPORT OPTION-HIGHBOY
- 37'-2"
- 10'-8"
- EXTENDED WEIGHT - SLING LANE
- EXTENDED WEIGHT - SLING LANE
- 9'-4"
- 19'-4"
- 58'-6"
- VIEW "A"
- NOTE: REMOVEABLE HANDRAILS TO REMOVE 10' TRAILER HEIGHT
- 13'-2"
- 10'-8"
- 49'-11"
- 32'-2"
- 13'-4"
- 9'-1"
- ELRUS 48' 18' VGF  
 ELRUS 2442 JAW  
 48" DISCHARGE CONVEYOR
- AXLE WEIGHTS ( SINGLE AXLE JEEP )  
 STEERING 5100 KG  
 DRIVES 14390 KG  
 JEEP 7080 KG  
 TRI 20640 KG
- AXLE WEIGHTS ( TANDEM AXLE JEEP )  
 STEERING 5080 KG  
 DRIVES 10900 KG  
 JEEP 11340 KG  
 TRI 20720 KG

- Available in diesel power for remote off-grid operations
- Hydraulic Side Dump Grizzly with adjustable bars
- Variable speed frequency control for precise material flow



- 48" x 18" Vibrating Grizzly Feeder (VGF) with integral motor mount
- Hydraulic jaw adjustment (optional full hydraulic adjustment and tramp iron protection available)
- 48" hydraulic raise-and-lower discharge conveyor for optimized material handling
- Heavy-duty tri-axle walking beam suspension for enhanced stability during transport and operation
- Hydraulic chassis leveling for quick setup
- Impact bed under jaw crusher and bypass chute for increased wear protection

- Available in diesel power for versatile use in remote locations
- Hydraulic Side Dump Grizzly with adjustable bars
- Variable speed frequency control for improved material flow management





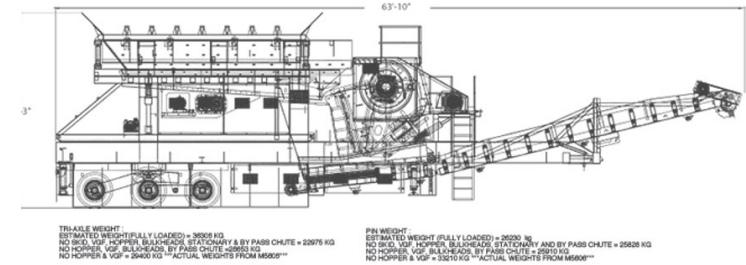
# ELRUS 3054 JAW CRUSHER



The ELRUS 3054 Primary Jaw Crusher is designed for the most severe crushing conditions, making it a robust solution for high-demand applications. This heavy-duty jaw crusher is built for durability, mobility, and ease of setup, offering reliable performance for portable aggregate producers.

### FEATURES:

- 48" x 20' Vibrating Grizzly Feeder (VGF) with integral motor mount
- Hydraulic jaw adjustment for easy and precise settings
- Hopper and feeder are easily removable for transport (the feeder module can be lifted off in two pieces or skidded off in one piece)
- Heavy-duty tri-axle walking beam suspension for improved transport stability
- Hydraulic leveling system for quick and efficient setup
- Adjustable discharge conveyor for optimized material flow
- Impact bed under the jaw crusher and bypass chute for enhanced durability
- Detachable bulkhead for ramp-side access



### OPTIONAL FEATURES:

- Available in diesel power for flexibility in remote locations
- Grizzly comes as a hydraulic side or end dump with adjustable bars
- Hydraulic tramp iron relief system for additional crusher protection
- Automatic tensioning system for consistent belt performance
- Variable speed frequency controller for precise feeder operation

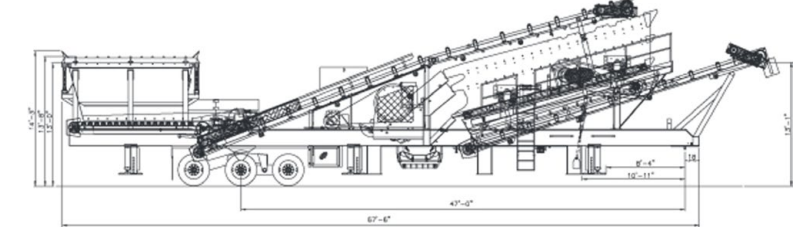
# ELRUS 2036 FEEDER SCREEN JAW CRUSHER



The ELRUS Feeder Screen Jaw Plant is a medium-sized jaw crushing solution offering quick setup, mobility, and high performance. Ideal for portable aggregate producers, it pairs seamlessly with the ELRUS cone plant to form a closed-circuit crusher system, maximizing production and efficiency. For added functionality, simply pair the 2036 Feeder Screen Jaw Plant with an ELRUS cone plant to create a closed-circuit system.

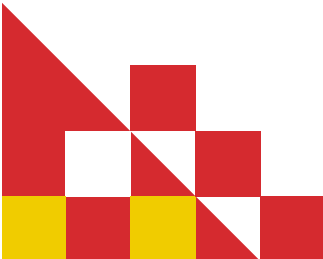
### FEATURES:

- 14' travel height for efficient transportation
- 36" belt feeder for optimal material handling
- Side discharge product conveyor for seamless material flow
- Hydraulic jaw adjustment for quick and precise settings
- Heavy-duty tri-axle walking beam suspension for improved stability
- Hydraulic chassis leveling for faster setup on uneven ground
- Hydraulic screen raise and lower capabilities (available on 3-Deck models)
- Impact bed under jaw crusher and bypass chute for durability and performance
- Side dump Grizzly for pre-screening oversized materials
- Hydraulic dump Grizzly with remote control for enhanced convenience and safety



### OPTIONAL FEATURES:

- Screen sizes available from 5' x 14' to 6' x 20' to meet specific production requirements
- Jaw sizes available from 1036 to 2036 for varied applications
- Variable speed frequency control on the feeder for optimized feed rates
- Adjustable Grizzly bars for better material sorting





# SCREEN-JAW PLANTS



A screen-jaw plant integrates a screen, jaw crusher, and supporting conveyors onto a single chassis. This design allows for relocation without the need for disassembly, significantly reducing the number of loads required, saving valuable time and money, and improving overall plant safety.

These plants are capable of producing up to four products simultaneously, making them ideal for portable producers operating in sand and gravel pits. By removing natural fines and small round rocks from the crusher feed, producers can improve crusher production, increase fracture, and reduce flat and elongated particles (F&E).

The removed material can either be stockpiled or crushed separately to create Manufactured Sand (MF). This process involves feeding the material into a small cone crusher or VSI, which is then reintroduced into the circuit before reaching the second screen.



TRAVEL WEIGHT & DIMENSIONS					
Jaw Plant	Length	Width	Height	Pin Weight	Axel Weight
2236	61' - 8"	11' - 11"	15' - 9"	21, 300 kg (46,958 lbs)	22,000 kg (48,500 lbs)
2242	65	12'	15' - 5"	14,829 kg (32623 lbs)	33,766 kg (74286 lbs)
2054	71	12' - 3"	15' - 5"	23,300 kg (51,200 lbs)	29,000 kg (64,400 lbs)

## FEATURES:

- ELRUS-engineered jaws and screens
- Adjustable height
- Discharge conveyor
- 60" reversible under-screen conveyor
- Single cross conveyor
- Hydraulic jaw crusher adjustment (with full hydraulic adjustment and tramp iron protection available)
- Tri-axle walking beam suspension
- Hydraulic leveling system
- Adjustable discharge conveyor
- Impact bed under the jaw crusher and bypass chute

## OPTIONAL FEATURES:

- A rear partial fine reject conveyor

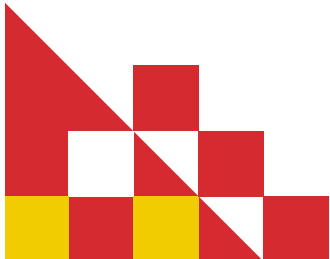
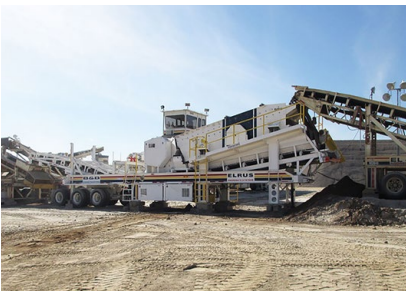
## CONFIGURATIONS:

### Option #1: 2236 Jaw with 6' x 16' Two-Deck Screen:

- Ideal for producers looking for a compact solution with excellent screening capacity and versatility for smaller operations

### Option #2: 2442 or 2054 Jaw with 6' x 20' Two-Deck Screen:

- Designed for larger operations requiring increased throughput and more extensive screening capabilities







# PARTS AND SERVICE

ELRUS offers a full range of parts and consumables, supported by a team of experts ready to get your equipment back to peak performance. Our skilled service specialists provide 24/7 support, on-site repairs, and rebuilds, ensuring you stay up and running wherever you are.



**ELRUS**  
AGGREGATE SYSTEMS

 | [ELRUSAggregateSystems](#)
 | [ELRUSAggregateSystems](#)
 | [ELRUSAggregateSystems](#)
 | [ELRUSAggregateSystems](#)

## ELRUS AGGREGATE SYSTEMS

### HEAD OFFICE:

4409 Glenmore Trail, SE  
Calgary AB T2C 2R8  
(403) 279-7741 1-888-535-7877

### NISKU, AB

1302 10 Street  
Nisku, AB  
T9E 8K2  
(780) 980-5600

### SASKATOON, SK

#100-737 66 Street  
Saskatoon, SK  
S7P 0E4  
(306) 668-0890

### WINNIPEG, MB

67007 Sturgeon  
Road 8 E, Rosser, MB  
R4B 0B2  
(204) 888-5588

### CAMBRIDGE, ON

170 Turnbull Court  
Cambridge, ON  
N1T 1J2  
(519) 624-6500

### AYLMER, ON

702 Talbot Street  
West Aylmer, ON  
N5H 2V1  
(226) 777-8668

### CHEHALIS, WA

173 N Hamilton Rd,  
Chehalis, WA 98532  
United States  
(253) 891-0888